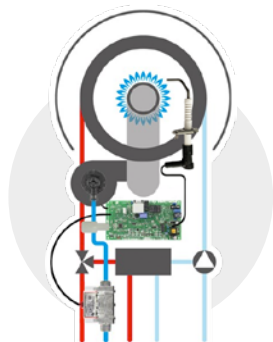


# Full Premix Condensing Boilers For Large Spaces



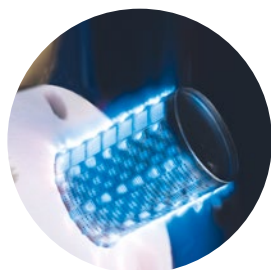
# Full Premix Condensing Boilers



## Efficiency and Savings up to 97%\* with Electronic Gas Adaptive System

Enerwa Plus detects the gas quality instantly and keeps burning quality constant with its Electronic Gas Adaptive System and Full Premix features. By using all the energy of the gas it provides up to 96.6%\* **efficiency and savings.**

\* At 30% of Nominal Heat Power and Low Temperature Regime (η1)



## High Savings with 1/5 and 1/6 Modulation

Varying across different models, the wide modulation ranges from 1/5 to 1/6 can decrease the power down to 7 kW, thus adjusting its capacity according to your requirements to provide **you savings in both gas and electric energy.**



## Hot Water Comfort in Double Taps (18 and 20 l/min)

Enerwa Plus boilers have enhanced double power capacity (42 and 45 kW) for hot water usage and enable you to use double taps simultaneously with high hot water flow rates up to 18 and 20 l/min.



## Long Lasting Life With Stainless Steel Exchangers

Enerwa boilers **can be used for long years** with their wide channel, no-welding, single coil, stainless steel main heat exchanger and stainless steel plate heat exchanger.



## In the Lowest NO<sub>x</sub> Class for Exhaust Gas According to the ErP Directives

Lowers environmentally hazardous NO<sub>x</sub> emissions even below the values determined by the best class level of 6 for NO<sub>x</sub> as an appendix of the Energy-related Products Directive (56 mg/kWh), to 25/27 mg/kWh **in order to reduce air pollution.**



## Smooth Operation With Corrosion-resistant Brass Hydroblock Component

With brass hydro block components resistant to thermal stress and corrosion, provides problem-free operation **for long years.**



## Always Ready Hot Water With Pre-Heat

When the pre-heating option is chosen, domestic water inside the plate heat exchanger is always kept warm and ready to use thus **the waiting time required for hot water is lowered to a minimum.**

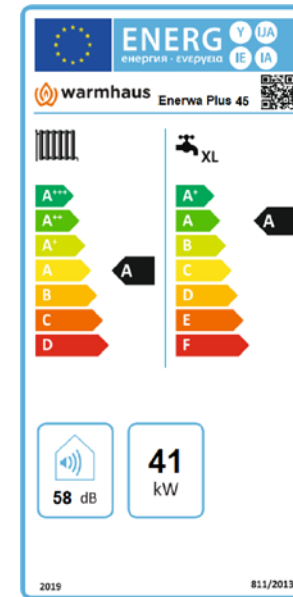


## Silent Operation and Low Heat Loss

Due to special insulation material used in the front and side plates, **heat loss from the body is reduced and silent operation is ensured.**

# XL Hot Water Comfort

The Enerwa Plus 42 and Enerwa Plus 45 boilers -designed by Warmhaus and manufactured in the Turkey boiler factory- are the best boilers for large houses and spaces with 2 or 3 bathrooms that have high heating and hot water demands.

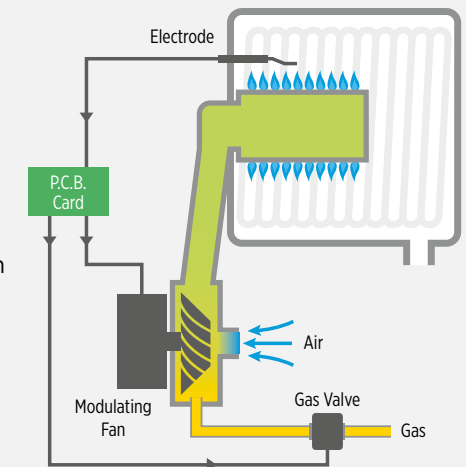


With H:725 x W:420 x D:385 mm dimensions and 117 liters volume, high heating and hot water demands in places with limited spaces are easily met. These boilers **provide practical solutions with low-cost and easy installation.**

## What is the Full Premix Gas Adaptive System?

The electronic card detects the gas quality instantly through the signal received over the electrode and preserves consistent burning quality due to the Full Premix System which commands the modulating fan and gas valve synchronously.

The Full Premix System ensures that the used gas burns with the most ideal mixture and all its energy is used to the maximum. Thus, the electronic Full Premix Gas Adaptive System provides **higher gas and electric savings** compared to premix boilers using a pneumatic system.





# Practical Heating Solutions For Large Houses



## Easy to Use Push-Button Panel

The wide 3" LCD digital screen with orange illumination shows the radiator water temperature and domestic hot water temperature at the same time. The screen also has multi-function features that enable various information like plumbing system pressure, warning/error codes, room thermostat connection, and parametric features that enable the equipment to be customized and easily tracked.

The RESET button that makes the boiler restart and enables separate adjustment of the radiator water temperature and domestic hot water temperature, and the MODE button that enables the winter, summer and on-off features combined with 6 push buttons ensure that the control panel is easy to use.



## How Does the Warmhaus ErP Boiler Stand Out?

- The circulation pumps of ErP condensing boilers are modulating pumps that can adjust their speed when necessary. Thus **the electric consumption of the equipment is reduced significantly.**
- ErP condensing boilers are products compatible with EU directives that **heat more efficiently and consume less energy.**
- ErP compatible products are labeled according to their energy class. So you can see how much energy-saving your product is capable of from its label.

# The Warmth of Your Home is In Your Command!

## Weekly Programmable Control Panels With Room Thermostats and Outdoor Air Temperature Sensor

With a modulated room thermostat remote control panel and outdoor air temperature sensor that works in coordination (both units are optional), you can install a comfortable and modulating automatic heating system that offers weekly programming, and temperature adjustment according to room temperature.



### WT-07

Cabled digital room thermostat with modulation and 4 buttons  
Product Code: 15311660600020



### WT-08

Cabled digital room thermostat with modulation and 10 buttons  
Product Code: 15311660600021



### WT-RF03

Wireless digital room thermostat with modulation and 10 buttons  
Product Code: 15311660600022



### WDHS-01

Cabled Outdoor Air Temperature Sensor  
Product Code: 15311660600001

## Remote Mobile Control with the RecoWa Application!

Product Code: 15211003000008



## RecoWa Wi-Fi Smart Room Thermostat Kit

RecoWa is an WiFi Smart Room Thermostat kit with Internet access that allows you to set any temperature you wish from anywhere and at any time through the mobile application.

You can download the RecoWa application to your mobile phone with an Android or IOS operating system over an Internet connection.



# New Design Stainless Steel Condensing Exchanger

- **Stainless steel material** that provides perfect resistance against corrosion
- A double-chambered **high efficiency** compact body that consists of a burning chamber and a condensing chamber separated with insulation
- The single-coil wide pipe with a oval shape provides long-term reliability against blockages caused by debris
  - Even distribution to the pipe and smooth flow rate
  - Perfect heat transfer
  - No-welding robust construction



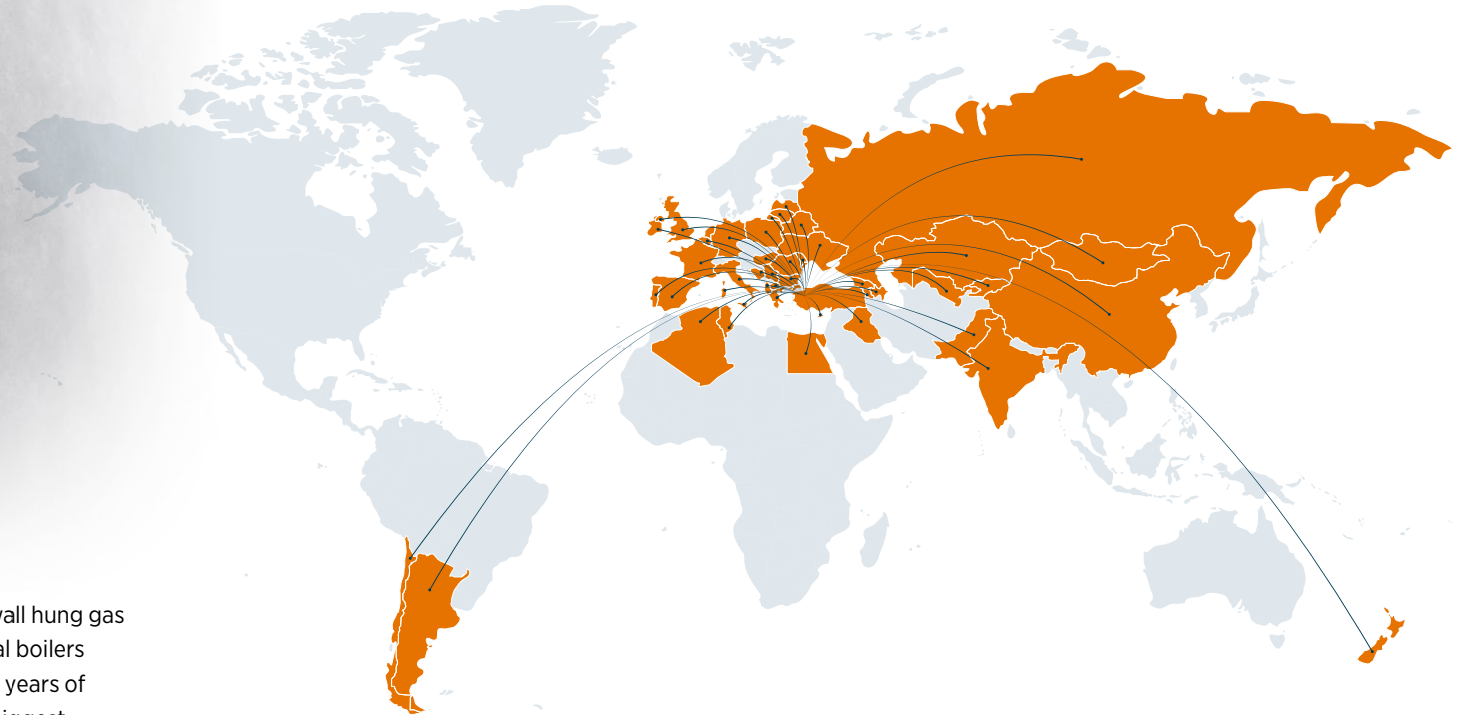
| Technical Data  | Unit              | Enerwa Plus 42/40  |           | Enerwa Plus 45/43  |           |
|---|-------------------|--|-----------|--------------------|-----------|
| <b>Gas Circuit (NG: Natural Gas)</b>  |                   | NG   | LPG       | NG                 | LPG       |
| Gas Supply Pressure (Gas Type)  | mbar              | 20 (G20)   | 37 (G31)  | 20 (G20)           | 37 (G31)  |
| Minimum / Maximum Gas Consumption   | m <sup>3</sup> /h | 0.7 / 4.0  | 0.3 / 1.6 | 0.7 / 4.2          | 0.3 / 1.7 |
| <b>Seasonal Space Heating Energy Class</b>  |                   | A  |           | A                  |           |
| <b>Seasonal Space Heating Energy Efficiency (η<sub>s</sub>)</b>   | %                 | 92   | 91        | 92                 | 91        |
| Useful Efficiency at Nominal Heat Power and High Temperature Regime (2) (η <sub>h</sub> )                       | %                 | 87.4   | 87.4      | 87.4               | 87.4      |
| Useful Efficiency at 30% of Nominal Heat Power and Low Temperature Regime (Partial Load) (1) (η <sub>l</sub> )  | %                 | 96.6   | 96.6      | 96.6               | 96.6      |
| <b>Radiator Circuit</b>   |                   | NG   | LPG       | NG                 | LPG       |
| Useful Heat Power at Nominal Heat Power and High Temperature Regime (2) (P <sub>h</sub> )                       | kW                | 38.2   | 38.2      | 41.4               | 41.3      |
| Useful Heat Power at 30% of Nominal Heat Output and Low Temperature Regime (Partial Load) (1) (P <sub>l</sub> ) | kW                | 7.91   | 7.91      | 7.91               | 7.91      |
| Minimum / Maximum Heat Output P <sub>h</sub> (50/30 °C)   | kW                | 7.6 / 42   | 7.5 / 42  | 7.6 / 45           | 7.5 / 44  |
| Temperature Adjustment Range (Minimum / Maximum) High (Radiator) / Low (Floor Heating)                          | °C                | 25 - 80 / 25 - 47  |           |                    |           |
| Operating Pressure (Minimum/Maximum)  | bar               | 0.5 / 3  |           |                    |           |
| Expansion Tank Volume   | ℓ                 | 12   |           | 12                 |           |
| Maximum Pump Pressure (Q = 0 m <sup>3</sup> /h)   | mSS               | 7.6  |           | 8                  |           |
| Maximum Pump Flow Rate  | ℓ/h               | 2300 (H = 0.4 mSS)   |           | 2800 (H = 0.8 mSS) |           |
| <b>Water Heating Energy Efficiency Class</b>  |                   | A  |           | A                  |           |
| <b>Declared Load Profile</b>  |                   | XL   |           | XL                 |           |
| <b>Water Heating Energy Efficiency</b>  | %                 | 81   |           | 81                 |           |
| <b>Domestic Hot Water Circuit (Minimum / Maximum) Heat Load</b>   | kW                | 7.2 / 39.5   |           | 7.2 / 42.5         |           |
| Domestic Hot Water Flow Rate (Minimum / Maximum) (Δt: 30 °C)  | ℓ/min.            | 1.5 / 18   |           | 1.5 / 20           |           |
| Domestic Hot Water Flow Rate (Minimum / Maximum) (Δt: 35 °C)  | ℓ/min.            | 16   |           | 17                 |           |
| Domestic Water Pressure (Minimum / Maximum)   | bar               | 0.5 / 10   |           |                    |           |
| Temperature Adjustment Range (Min - Max)  | °C                | 35 - 60  |           |                    |           |
| Electricity Consumption (Max./Min.) [Supply: 230 V + 10%; -15%]   | Watt              | 149 / 90   |           | 154 / 90           |           |
| Protection Index  | IP                | IPX5D  |           |                    |           |
| <b>Exhaust Gas Circuit</b>  |                   | NG   | LPG       | NG                 | LPG       |
| (80/60 °C) Exhaust Gas Temperature (Min./Max.)  | °C                | 60 / 65  | 54 / 66   | 61 / 66            | 55 / 67   |
| (50/30 °C) Exhaust Gas Temperature (Min./Max.)  | °C                | 34 / 42  | 34 / 43   | 35 / 43            | 35 / 44   |
| Weighted Value of NO <sub>x</sub> (Class 6)   | mg/kWh            | 25   | 50        | 27                 | 53        |
| <b>General/Dimensions (H x W x D)</b>   | mm                | 725 x 420 x 385 (<0.12 m <sup>3</sup> )  |           |                    |           |
| Sound Level   | dB(A)             | 58   |           | 58                 |           |
| Net Weight/Packed Device Weight   | kg                | 37.5 / 39.5  |           | 38 / 40            |           |
| Maximum Flue Range (Horizontal)/(Vertical)*   | m                 | 10 / 11  |           | 10 / 11            |           |
| Flue Connection Types   |                   | C <sub>15</sub> , C <sub>33</sub> , C <sub>43</sub> , C <sub>53</sub> , C <sub>63</sub> , C <sub>83</sub> , B <sub>23</sub> , B <sub>23P</sub> |           |                    |           |

(1) For condensing boiler heaters it means low temperature 30 °C, for low temperature boilers 37 °C and for other heaters 50 °C return temperature (heater input).  
 (2) High temperature regime means 60 °C return water temperature at heater input and 80 °C output water temperature.



## Global Heating Brand

Products developed by the Warmhaus R&D Department are manufactured in Turkey and distributed all over the world under the Warmhaus brand.



## About Warmhaus

Warmhaus, an affiliate of Beycelik Holding, produces wall hung gas condensing domestic boilers, high capacity commercial boilers and steel panel radiators treasuring from more than 24 years of experience in HVAC industry. Warmhaus is one of the biggest steel panel radiator manufacturers in the world and is heating one of every seven houses in Turkey. Warmhaus products are warming houses and buildings in more than 50+ countries.

**With modernised production lines and high quality products; Warmhaus warms houses and buildings in more than 50+ countries.**

- Albania
- Algeria
- Argentina
- Azerbaijan
- Belgium
- Bosnia
- Bulgaria
- Chile
- China
- Egypt
- Estonia
- France
- Georgia
- Germany
- Greece
- Hungary
- India
- Iraq
- Ireland
- Italy
- Jordan
- Kazakhstan
- Kosovo
- Kyrgyzstan
- Latvia
- Lithuania
- Macedonia
- Moldova
- Mongolia
- Netherlands
- Northern Cyprus
- Poland
- Portugal
- Romania
- Russia
- Serbia
- Spain
- Tunisia
- Turkmenistan
- Ukraine
- United Kingdom
- Uzbekistan



## Follow Us On Social Media